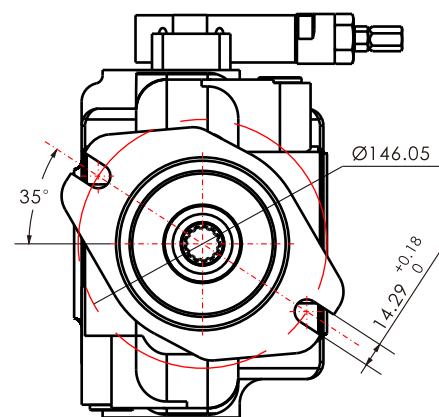
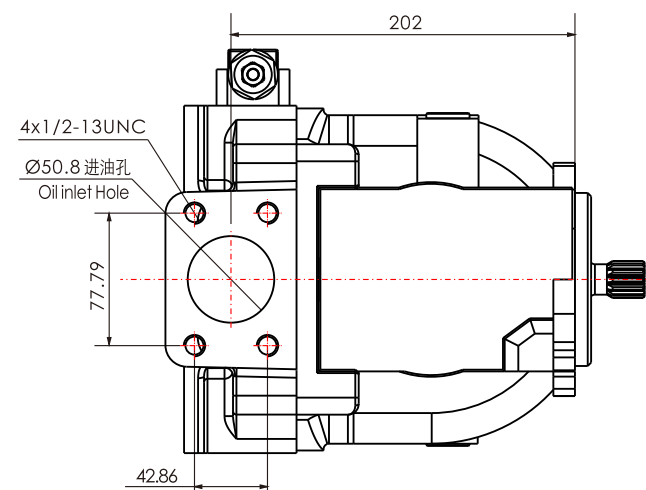
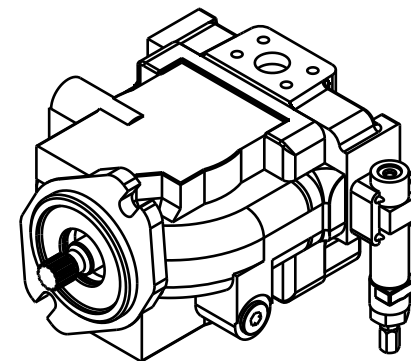
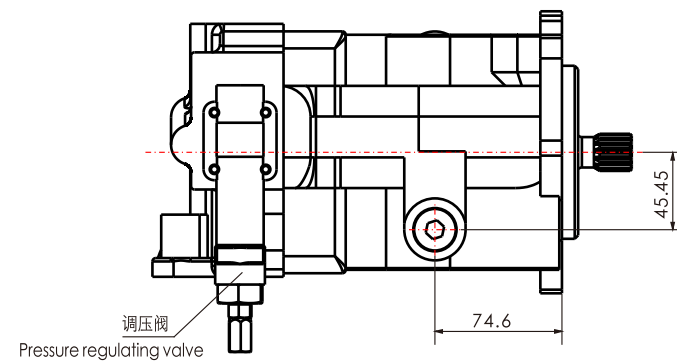
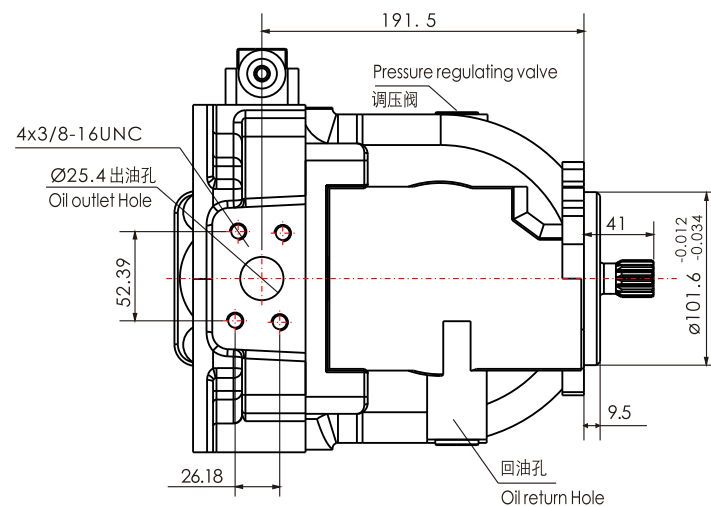


安装尺寸图

SLNSTALLATION DIMENSIONS



WPVB 柱塞泵系列

WPVB SERIES PISTON PUMPS

控制方式

- ① 带或不带远程控制装置的压力补偿器
- ② 带可调排量控制的压力补偿器
- ③ 负载传感补偿器
- ④ 手轮控制

Control Mode

- ① Pressure compensator with or without a remote control facility.
- ② Pressure compensator with a djustable displacement control.
- ③ Load sensing compensator.
- ④ Handwheel control.



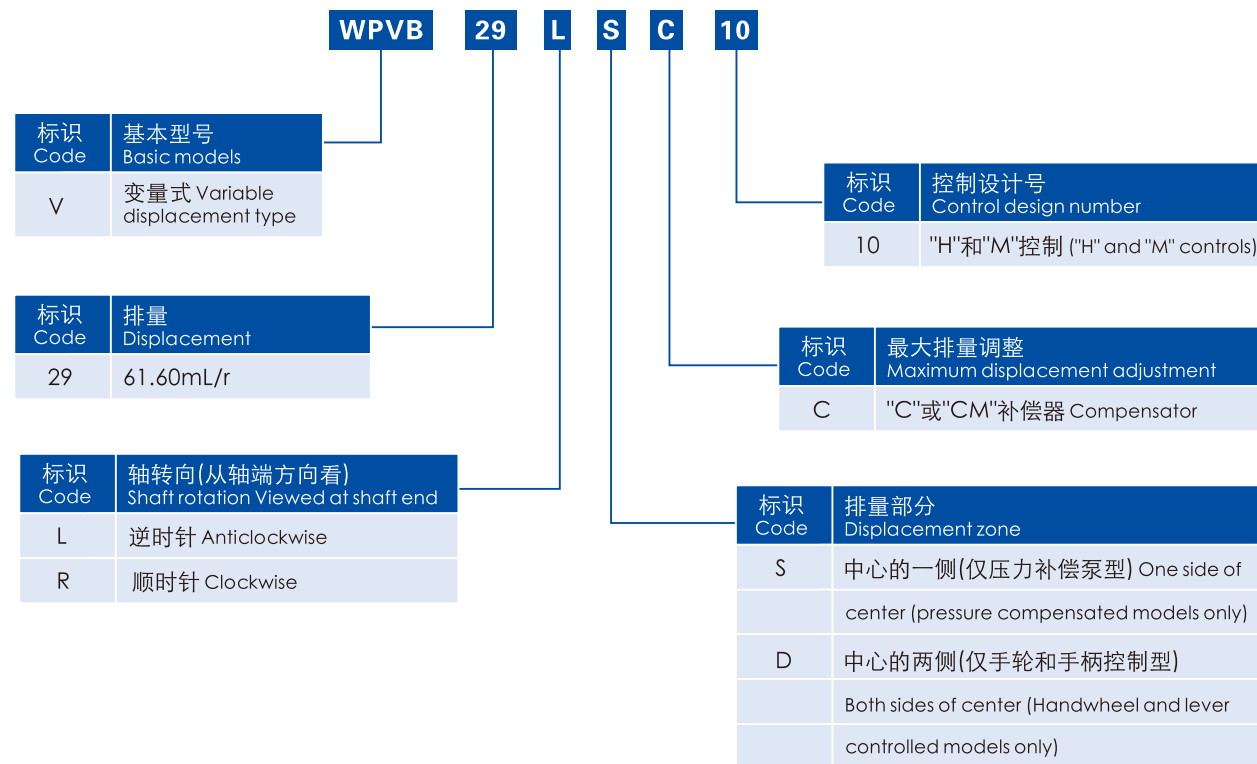
WPVB柱塞泵是轻型斜盘式轴向泵，包括定量型和变量型，使用各种液压油均能达到很高的性能指标和效率。定量型的容积效率和机械效率很高；变量型能与压力和/或流量的需要紧密匹配，有多种控制方式，使用范围广。

Both fixed and variable displacement models make up this range of axial piston pumps. Their high performance ratings and efficiencies are achieved with a variety of hydraulic fluids. Fixed displacement models are noted for their volumetric and mechanical efficiencies. Variable displacement models can closely match pressure and/or flow demand. There are several ways to control.

技术参数 (TECHNICAL PARAMETERS)

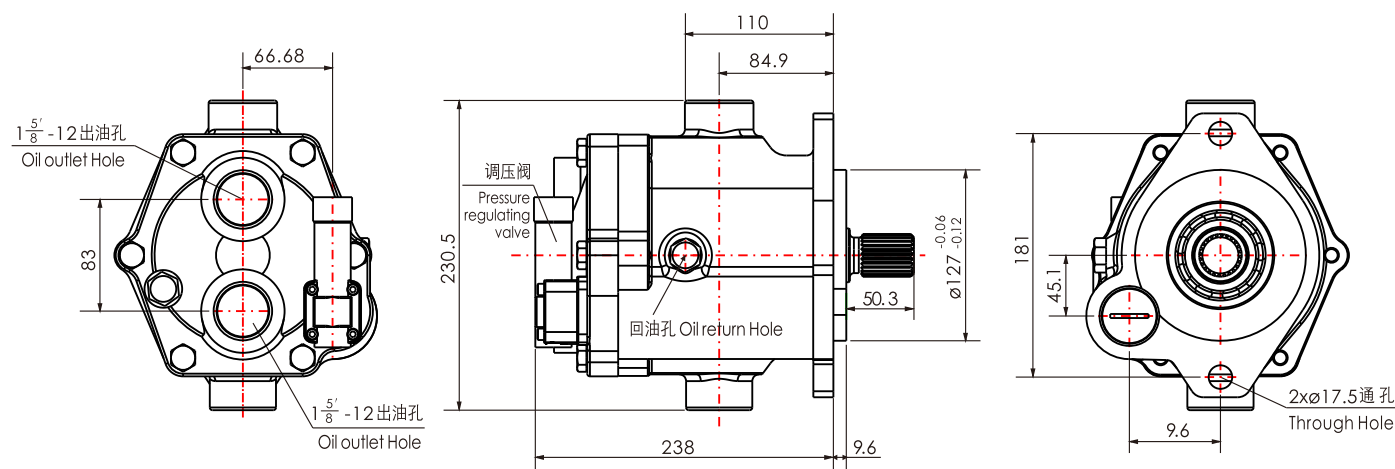
型 号 Model	WPVB29
排 量 Displacement	61.6mL/r
轴 旋 向 Shaft rotation	R- 顺时针Clockwise ; L- 逆时针Anticlockwise
额定转速 Rated Speed	1800r/min
进口压力 Inlet Pressure	1bar
额定压力 Rated Pressure	14bar
推荐油液 Recommended Oil	L-HM46(夏天Summer) ; L-HM32(冬天Winter)
工作方式 Working Mode	开式系统 Open-type System

型号编码 (WPVB SERIES TYPE CODE)



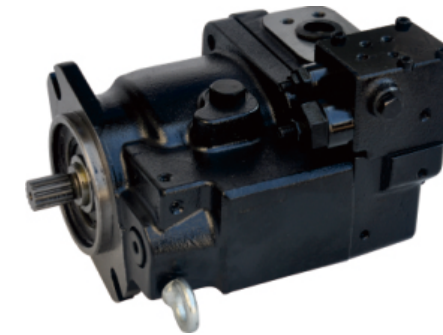
安装尺寸图

SLNSTALLATION DIMENSIONS



WK3VL 柱塞泵系列

WK3VL SERIES PISTON PUMPS



WK3VL系列最适合用于节省空间的工程机械、产业车辆及一般产业机械的泵。

The WK3VL series swash-plate type axial piston pump is a heavy duty variable displacement hydraulic pump newly developed for mobile and industrial applications.

产品特征和优点

① 低脉动、低噪声

通过研发独特的新机构，大幅度降低了噪声发生源的压力脉动。

② 高效率、卓越的吸入能力、长寿命

通过最佳配油盘的设计实现了高效、卓越的吸入能力，并通过采用大负载容量轴承和高强度的柱塞、滑靴从而实现了长寿化。

③ 辅助齿轮泵连接和泵的复合化、SAE/ISO规格的对应

可对应SAE规格的辅助齿轮泵连接和串联柱塞泵化，固定件和轴端形状对应SAE\ISO的规格。

④ 丰富的控制方式

以负载敏感和恒压型为基本，可使其卸载及压力可调,还可进行功率控制及其复合控制。

Features and Advantages

① Reduced Pressure Pulsation and Low Noise

The unique mechanism obtained through our long research has drastically reduced pressure pulsation.

② High Efficiency、High Self-priming Capability and Long Life

High efficiency、self-priming capability and long life are made possible by utilizing an optimized piston/slipper,high-load bearings and valve plate design.

③ Optional Through Drive

Optional through drive allows an auxiliary pump and WK3VL pump to be direct mounted proving a compact,low-cost solution.Available with American(SAE) and International(ISO)mounting and shaft.

④ Varieties of Control Methods

Unload and remotely pressure controls are made possible in addition to load-sensing and pressure constant control.In addition,the horsepower control and the combination of these are available.